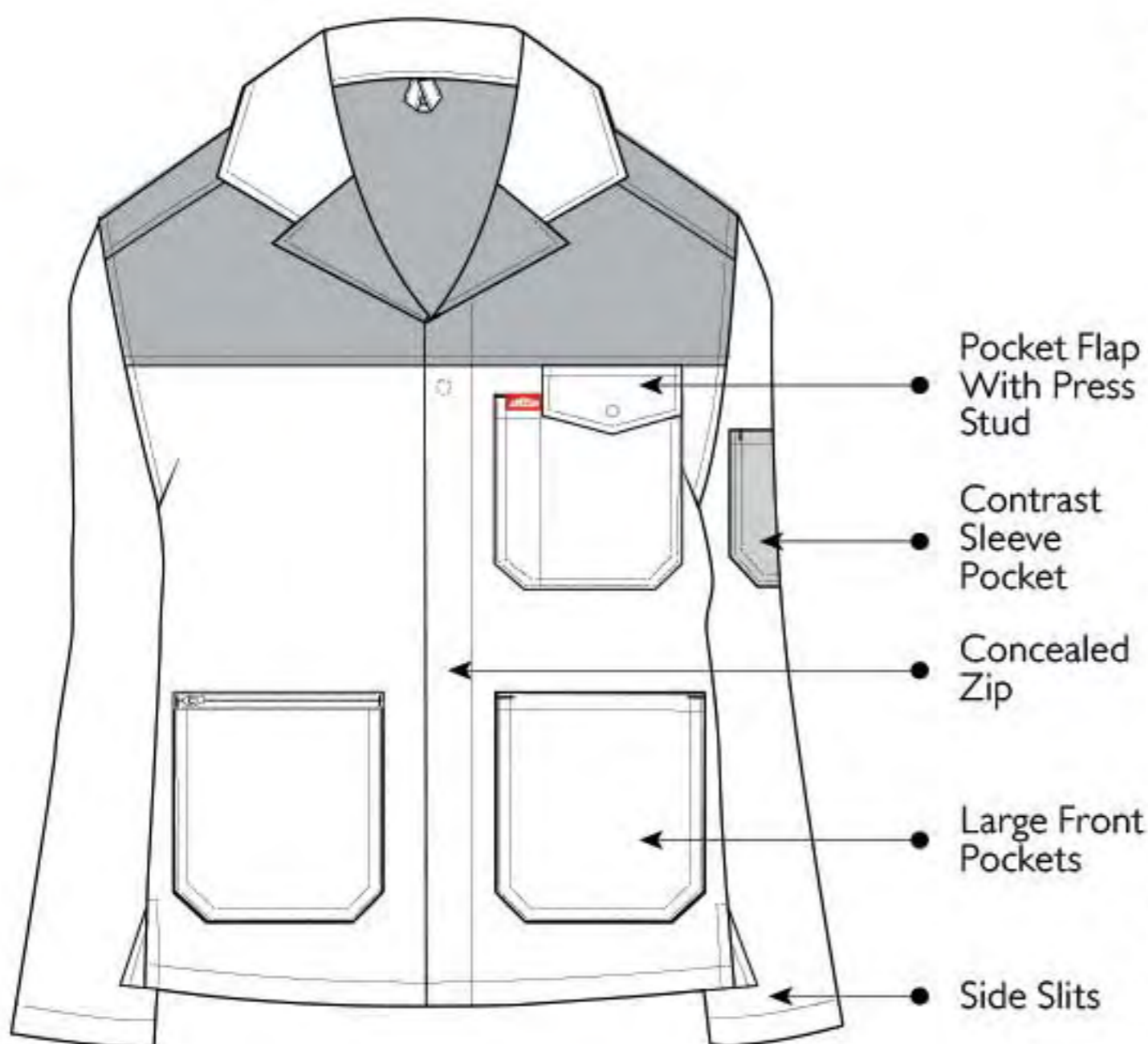




TWO TONE WORK JACKET



FABRIC: 65/35 Polycotton Twill

WEIGHT: 230 gm²

SIZES: XS S M L XL 2XL 3XL 4XL 5XL

COLOURS: Olive/Khaki, Navy/Red, Grey/Black, Navy/Stone, Royal/Navy

Chest pocket with press stud closure and pen division / Large front pocket with zip closure for secure storage / Concealed YKK Zip / Sleeve pocket in contrasting colour / Bar tacks on stress points for extra strength