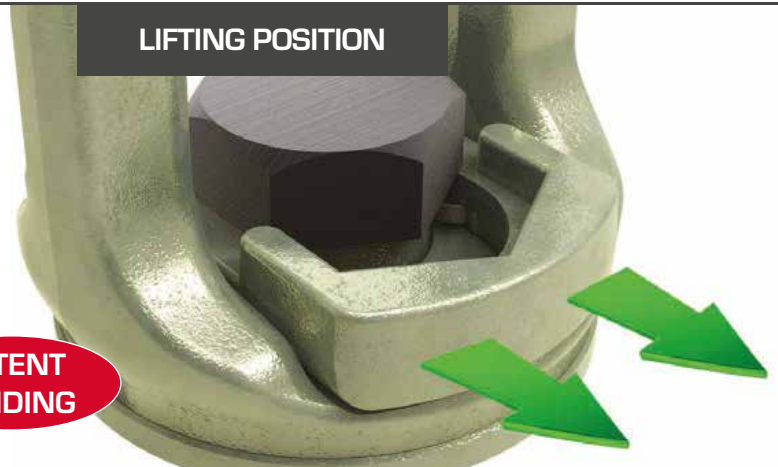


CROSBY® SL150 SLIDE-LOC™

CROSBY'S INNOVATIVE ALTERNATIVE TO STANDARD EYE BOLTS

INSTALLATION POSITION

LIFTING POSITION



PATENT PENDING

The visible red QUIC-CHECK® mark indicates that the Crosby Slide-Loc® is ready for installation but not for lifting.

QUIC-CHECK®



When the red QUIC-CHECK® mark is under the slide, the Crosby Slide-Loc® is ready for lifting.

The new Crosby SL150 Slide-Loc® provides features not found on standard lifting eye bolts. At the centre of the new design is the **patent pending locking mechanism** that slides to lock the bolt for faster installation, then slides back to make it ready for lifting — without the need for tools.

- When compared to respective size eye bolts, the Crosby SL150 Slide-Loc®:
 - Has a larger eye opening for easy access
 - Utilizes a bail that swivels 360° to keep load aligned with the sling leg, and maintains full WLL at any angle
- Fatigue Rated® to 20,000 cycles at 1-1/2 times the WLL
- The patent pending locking mechanism provides quicker installation, without the need for tools
- QUIC-CHECK® mark indicates if the Crosby SL150 Slide-Loc® is ready for the lift. Red on the bail indicates the Slide-Loc® bail and bolt are engaged for installation
- Forged alloy steel and Quenched and Tempered bail provides toughness in potentially abusive field conditions
- Meets the Machinery Directive 2006/42/EC guidelines and is marked with CE accordingly
- Capacities from 0.5 to 3.2 metric tons
- Bolt sizes: 10 mm to 24 mm



SWIVELS
360°

Fatigue Rated

"QT"
QUENCHED & TEMPERED

CE

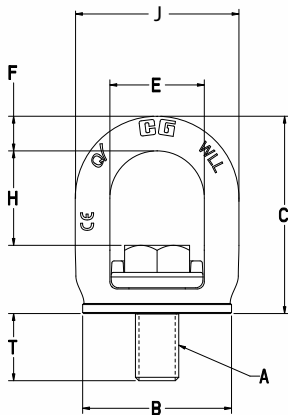
Load Rated

QUIC-CHECK®
Q

CROSBY® SL150 SLIDE-LOC™

ADDITIONAL INFORMATION:

- Forged Alloy Steel – Quenched and Tempered bail provides the following:
 - Easily readable “Raised Lettering” showing the name Crosby or “CG” and PIC Code for material traceability
 - Greater durability providing the increased “Toughness” desired in potentially abusive field conditions
 - Larger opening than standard eye bolts
- The Working Load Limit is permanently forged into each bail.
- 360° degree swivel
- Rated at 100% for 90 degree angle
- Fatigue rated to 20,000 cycles at 1-1/2 times the Working Load Limit
- Meets the Machinery Directive 2006/42/EC guidelines and is marked with CE accordingly
- Proof Tested to 2.5 times Working Load Limit (EN1677)
- Replacement bolts available, including longer bolts
- 4:1 Design Factor
- Manufactured by a ISO 9001 facility
- Bolt specification for metric bolt is Grade 10.9 alloy cap screw to ISO 898-1
- Unique locking mechanism makes the lifting point well suited for quick attachment to load surface. No need for tools
- Features **QUIC-CHECK®** markings on bail to assist in knowing when device is ready for lifting



SL-150 M METRIC SLIDE-LOC™ LIFT POINT

WEIGHT EACH (kg)	SL-150M STOCK NO.	WORKING LOAD LIMIT (t) *	DIMENSIONS (mm)							EFFECTIVE THREAD PROJECTION LENGTH	
			BOLT SIZE A	B	C	E	F	H	J	T	
0.14	1068515	0.50	M10X1.5X25	35.5	53.0	28.0	8.5	27.8	45.0	14.6	
0.23	1068524	0.75	M12X1.75X30	42.5	62.6	33.0	10.5	32.9	54.0	18.3	
0.50	1068533	1.50	M16X2X40	55.0	75.7	37.0	13.2	37.0	63.4	24.5	
0.94	1068542	2.30	M20X2.5X50	68.8	91.1	43.9	16.0	43.6	75.6	31.0	
1.60	1068551	3.20	M24X3X60	82.5	110.0	52.8	19.2	52.8	91.2	37.0	

* Ultimate load is 4 times the Working Load Limit.



SL-150
SLIDE-LOC
LIFTING POINT

SL-150 UNC SLIDE-LOC™ LIFT POINT

WEIGHT EACH (lbs.)	SL-150 STOCK NO.	WORKING LOAD LIMIT (t) *	DIMENSIONS (in.)							EFFECTIVE THREAD PROJECTION LENGTH	
			BOLT SIZE A	B	C	E	F	H	J	T	
0.30	1068407	0.50	3/8-16 X1	1.40	2.09	1.10	0.33	1.11	1.77	0.60	
0.53	1068416	0.75	1/2-13 X1-1/4	1.67	2.47	1.30	0.41	1.30	2.13	0.79	
1.10	1068425	1.50	5/8-11X1-5/8	2.17	2.98	1.46	0.52	1.46	2.50	1.01	
2.05	1068434	2.30	3/4-10 X 2	2.71	3.59	1.72	0.63	1.72	2.98	1.26	
2.16	1068443	2.30	7/8-9 X 2	2.71	3.61	1.72	0.63	1.72	2.98	1.23	
3.73	1068452	3.20	1-8 X 2-1/2	3.25	4.33	2.08	0.76	1.93	3.59	1.59	

* Ultimate load is 4 times the Working Load Limit.