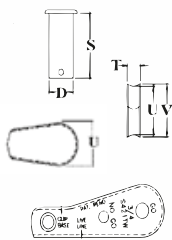
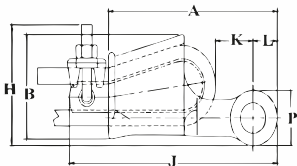
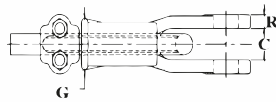


CROSBY® S-421T WEDGE SOCKETS



S-421T

Wedge sockets meet the performance requirements of Federal Specification RR-S-550E, Type C, except those provisions required of the contractor.



- Wedge socket terminations have an efficiency rating of 80% based on the catalogue strength of XXIP wire rope
- Meets or exceeds all requirements of ASME B30.26 including identification, ductility, design factor, proof load and temperature requirements. Importantly, these sockets meet other critical performance requirements including fatigue life, impact properties and material traceability, not addressed by ASME B30.26
- Type Approval and certification in accordance with ABS 2007 Steel Vessel Rules. 1-1-17.7, and ABS Guide for Certification of Cranes
- Basket is cast steel and individually magnetic particle inspected
- Pin diameter and jaw opening allows wedge and socket to be used in conjunction with closed swage and spelter sockets
- Secures the tail or "dead end" of the wire rope to the wedge, thus eliminates loss or "Punch out" of the wedge
- Eliminates the need for an extra piece of rope, and is easily installed
- The TERMINATOR™ wedge eliminates the potential breaking off of the tail due to fatigue
- The tail, which is secured by the base of the clip and the wedge, is left undeformed and available for reuse
- Incorporates Crosby's patented QUIC-CHECK® "Go" and "No-Go" feature cast into the wedge. The proper size rope is determined when the following criteria are met:
 - 1) The wire rope should pass thru the "Go" hole in the wedge
 - 2) The wire rope should NOT pass thru the "No-Go" hole in the wedge
- Utilizes standard Crosby Red-U-Bolt® wire rope clip
- The 9-10mm through 28mm standard S-421 wedge socket can be retrofitted with the new style TERMINATOR wedge
- **Available with Bolt, Nut and Cotter Pin**
- U.S. patent 5,553,360, Canada patent 2,217,004 and foreign equivalents
- Meets the performance requirements of EN 13411-6:2003

S-421T WEDGE SOCKETS (Assembly includes Socket, Wedge, Pin and Wire Rope Clip)

WIRE ROPE DIA. (mm)	S-421T STOCK NO.	API 2C S-421T STOCK NO.	WEIGHT EACH (kg)	S-421TW STOCK NO. WEDGE ONLY	API 2C S-421TW STOCK NO. WEDGE ONLY	WEDGE ONLY WEIGHT EACH (kg)	OPTIONAL G-4082 BOLT, NUT & COTTER	
							G-4082 STOCK No.	WEIGHT EACH (kg)
9-10	1035000	1035005	1.44	1035555	1092230	.23	1092227	.17
11-13	1035009	1035014	2.79	1035564	1092248	.48	1092236	.31
14-16	1035018	1035023	4.40	1035573	1092257	.81	1092254	.52
18-19	1035027	1035032	6.58	1035582	1092293	1.18	1092281	.86
20-22	1035036	1035041	9.75	1035591	1092319	1.82	1092307	1.46
24-26	1035045	1035050	13.9	1035600	1092337	2.44	1092325	2.44
28	1035054	1035059	20.5	1035609	1092364	3.56	1092343	3.40
30-32	1035063	1035068	29.4	1035618	1092375	4.80	1092372	4.70

WIRE ROPE DIA. (mm)	S-421T STOCK NO.	API 2C S-421T STOCK NO.	DIMENSIONS (mm)															
			A	B	C+/- 2.29	D	G	H	J*	K*	L	P	R	S	T	U	V	
9-10	1035000	1035005	145	69.1	20.6	20.6	35.1	77.7	198	47.8	22.4	39.6	11.2	54.1	11.2	31.8	35.1	
11-13	1035009	1035014	175	88.1	25.4	25.4	41.1	95.5	226	32.0	26.9	49.3	12.7	65.0	13.5	44.5	47.8	
14-16	1035018	1035023	210	109	31.8	30.2	53.8	114	273	50.5	31.0	57.2	14.2	82.6	17.5	51.0	55.5	
18-19	1035027	1035032	251	130	38.1	35.1	62.0	134	314	61.2	35.6	66.8	16.8	92.2	19.8	59.5	65.0	
20-22	1035036	1035041	286	149	44.5	41.4	68.5	156	365	63.0	42.4	79.5	19.1	109	22.4	68.5	74.5	
24-26	1035045	1035050	325	161	51.0	51.0	74.7	177	414	77.2	51.0	95.5	22.4	119	26.2	73.0	83.5	
28	1035054	1035059	365	176	57.0	57.0	84.0	194	466	65.0	57.0	108	25.4	138	27.9	82.6	90.5	
30-32	1035063	1035068	415	222	66.5	63.5	90.5	239	520	74.7	59.5	114	26.9	156	30.2	117	125	

*Nominal NOTE: For intermediate wire rope sizes, use next larger size sockets. The S-423T Super TERMINATOR wedge is designed to be assembled only into the Crosby S-421T TERMINATOR socket body. IMPORTANT: The S-423TW for sizes 14mm through 28mm will fit respective size standard Crosby S-421T basket. The 30-32mm S-423TW will only fit the Crosby S-421T 30-32mm basket marked with TERMINATOR.