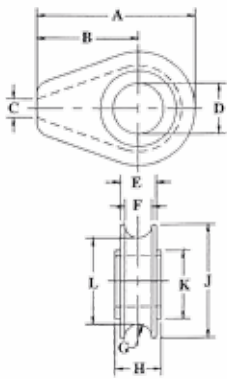


CROSBY® THIMBLES

SOLID WIRE ROPE THIMBLES

S-412



- Cast Ductile Iron.
- Fits pin for open wire rope socket, boom pendant clevis and wedge sockets.

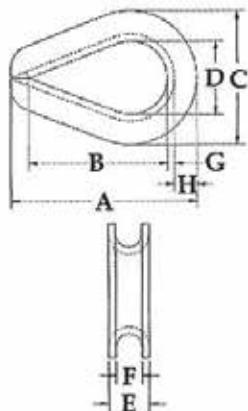
ROPE DIA. (mm)	S-412 STOCK NO.	WEIGHT EACH (kg)	DIMENSIONS. (mm)										
			A	B	C	D	E	F	G	H	J	K	L
13	1037121	0.28	71.5	44.5	6.35	26.9	19.1	14.2	71	22.4	54.0	41.4	39.6
16	1037149	1.00	119	76.0	9.65	33.3	26.9	20.6	10.4	28.7	86.0	57.0	65
18 - 20	1037167	1.05	119	76.0	9.65	38.1	26.9	20.6	10.4	35.1	86.0	57.0	65
22	1037185	2.47	154	97.0	12.7	44.5	35.1	26.9	13.5	41.4	114	82.5	87.5
24 - 26	1037201	2.38	154	97.0	12.7	54.0	35.1	26.9	13.5	46.0	114	82.5	87.5
28 - 30	1037229	4.21	184	116	16.0	60.5	44.5	33.3	16.8	52.5	137	98.5	103
32 - 35	1037247	4.45	184	116	16.0	67.0	49.3	38.9	19.8	58.5	137	98.5	105

EXTRA HEAVY WIRE ROPE THIMBLES

G-414

G-414 meets the performance requirements of Federal SPEC FFT-276b Type III, except for those provisions required of the contractor.

- Available in Hot Dip galvanized or Stainless Steel (Type 304).
- Meets the performance requirements of EN13411-1:2002.
- Stainless steel recommended for more corrosive environments where greater protection is required.
- Greater protection against wear and deformation of the wire rope eye.
- Longer service life.



ROPE DIA. (mm)	STOCK NO.		WEIGHT PER 100 (kg)	DIMENSIONS (mm)							
	G-414 GALV.	SS-414 STAINLESS		A	B	C	D	E	F	G	H
6-7	1037639	1037960	2.95	55.5	41.4	38.1	22.4	11.2	71	1.5	5.85
* 8	1037657	1037988	5.35	63.5	47.8	46	26.9	14	8.65	2.05	7.1
* 9-10	1037675	1038004	9.8	73	54	54	28.7	16.8	10.4	2.8	8.65
11-12	1037693	-	15.7	82.5	60.5	60.5	31.8	18.8	11.9	3.3	9.65
* 13-15	1037719	1038022	23.1	92	70	70	38.1	23.4	13.5	3.55	10.4
* 16	1037755	1038040	34.3	108	82.5	79.5	44.5	26.2	16.8	4.05	12.7
* 18-20	1037773	1038068	72	127	95.5	96.5	51	33	19.8	5.6	16.8
22	1037791	-	81	140	108	108	57	37.3	23.9	5.6	19.1
24-26	1037817	-	142	156	114	125	63.5	44.5	26.9	6.35	22.4
28-32	1037835	-	181	178	130	149	73	47.8	33.3	6.35	28.7
32-35	1037853	-	402	230	165	173	89	57.2	36.6	9.65	28.7
32-38	1037871	-	587	229	159	181	89	66.5	39.6	12.7	28.7
40	1037899	-	771	286	203	207	102	76.2	43.7	12.7	35.1
44	1037915	-	805	310	229	216	114	77.7	46.7	12.7	33.3
48-52	1037933	-	1259	384	305	264	152	85.9	53	12.7	38.1
56	1037951	-	1792	435	356	302	178	98.6	60.5	16	41.4

* SS-414 sizes available in stainless steel type 304.