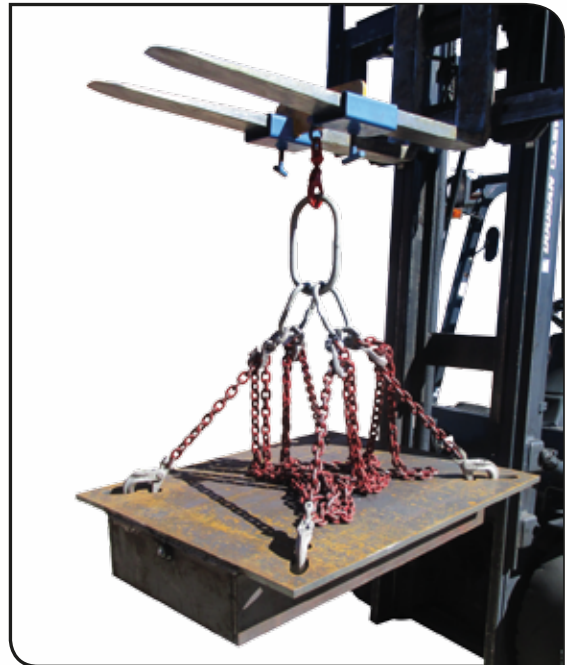
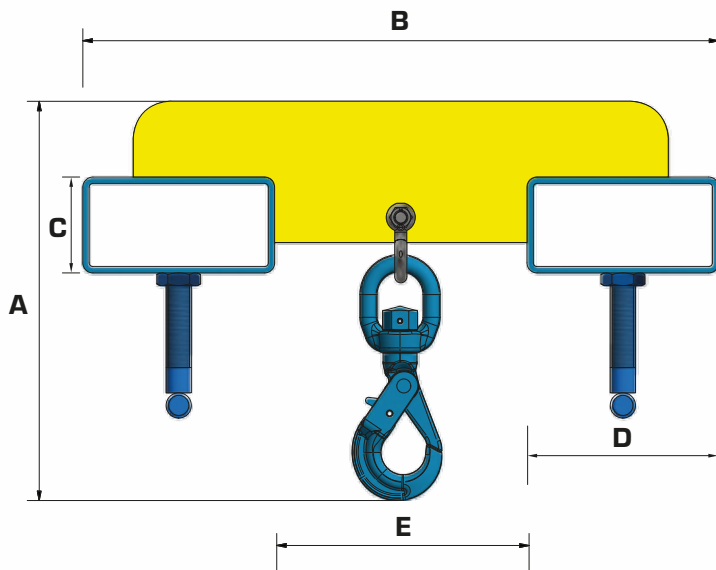


SALVA-VIDA FORKLIFT ATTACHMENT



FEATURES:

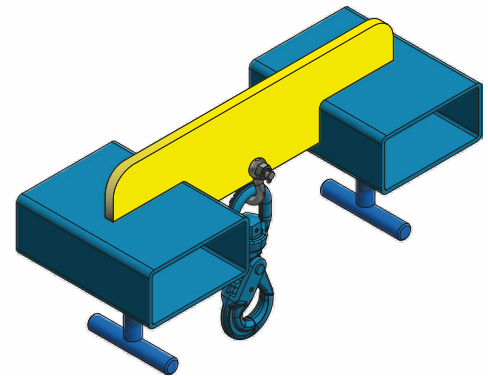
- Manufactured in South Africa
- All units are Proof Load Tested to 1.5 times the Working Load Limit (W.L.L)
- Swivel Self Locking Hook for Safety

APPLICATION

- Convert your forklift truck into a [Mini] crane
- To enable the user to lift a load safely, where using the teeth of the forklift is not practical, and slinging is possible

USER GUIDE

- Slide the forklift attachment half way over the forks & tighten the adjustable lock bolts. The 1 ton, 2 ton and 3 ton units are designed to suit a variety of forklift teeth ranging from 100 x 38 mm to 120 x 50 mm teeth
- A competent person is to determine, the correct unit to suit the forklift capacity as well as the weight of the load to be lifted
- Attach a suitable sling to the self-locking hook, secure the load and lift as normal



PRODUCT CODE	WORK LOAD LIMIT (ton)	A (mm)	B (mm)	C (mm)	D (mm)	E (mm)
FORKLIFTHA0001	1	±315	504.00	76.00	152.00	200.00
FORKLIFTHA0002	2	±350	504.00	76.00	152.00	200.00
FORKLIFTHA0003	3	±395	504.00	76.00	152.00	200.00

