

STRAIGHTPOINT LOAD CELLS

ONLY FOR USE WITH SW-HHP HANDHELD



- Hardened bushes to accept industry standard shackles
- Std. AA Batteries 1200hrs Easy no tools access
- Internal Antennae
- Environmental protection IP67/NEMA6
- High-quality hard anodised aerospace aluminium
- Angular ends to reduce weight and snagging when rigged

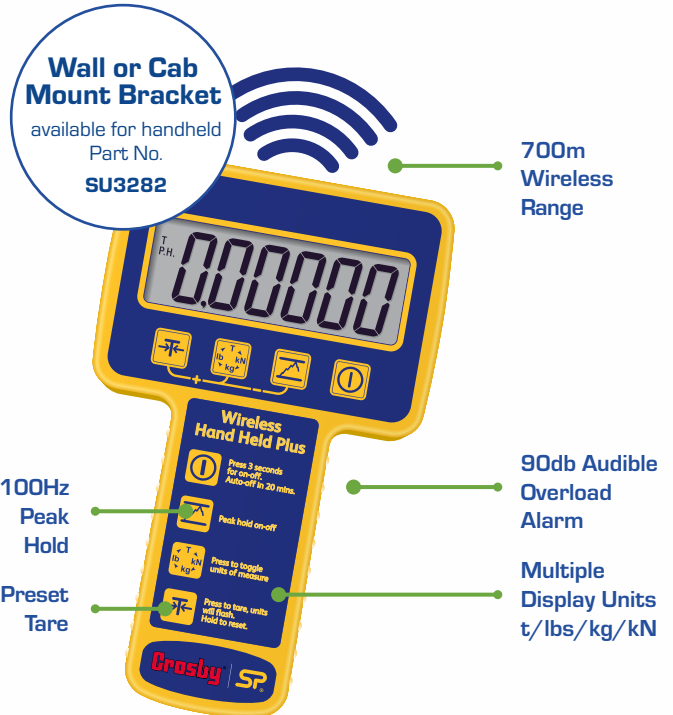
Radiolink plus is designed to be rigged with Crosby standard shackles. Straightpoint's DNV-GL type approved wireless tension load cell is capable of weighing and dynamic load monitoring capacities from 1t to 500t (all in stock). An ATEX and IECEx version is also available for hazardous areas, zones 0, 1 & 2.

Two versions of the RLP are available:

- Long range 2.4GHz version providing industry leading wireless range of 700m to SP's SW-HHP handheld or software options.
- Bluetooth output and can be connected to any smart phone running our free HHP app on iOS or Android, at ranges up to 100m.

Constructed from high-quality aerospace grade aluminium, the RLP features an advanced internal design structure. This design provides the product with an unrivalled strength to weight ratio. The use of a separate internal sealed enclosure administers the load cell's electronic components with IP67 or NEMA6 environmental protection, even with the battery cover plate missing. All these features makes it an industry-leading dynamometer, suitable for use in the harshest of environments.

The versatile RLP is able to provide an update rate of 3Hz and can be easily configured to run at industry-leading speeds of up to 200Hz, making it ideal for dynamic force measurement.



Decades of development into this product include many stand out features, such as SP's unique strain gauging method that helps compensate for wire rope torque when it is loaded. The Radiolink plus tension load cell can also be used in combination with Straightpoint SW-MWLC high speed wireless data logging software, allowing for simultaneous control, display and real-time data logging of up to 100 Straightpoint wireless load cells.

A full array of wireless accessories are also available. They include signal boosters, LED wireless scoreboards and base stations with analogue (4-20mA, 0-10v, 0-5v) or digital (RS232/485, Modbus RTU, and ASCII) outputs.

Other features and benefits:

- Proprietary 2.4 GHz Wireless
- Remote On-Off from handheld display or software
- ATEX Zones 0, 1 & 2 available
- Design validated by F.E.A.
- 2 year warranty
- DNV-GL Type Approval
- Complies with ASME B30.26
- Bluetooth option is available and is supplied with a free HHP App for iOS and Android

STRAIGHTPOINT LOAD CELLS

Also available with hazardous area approval. Zones 0, 1 & 2



ATEX / IECEx
Ex ia II C T4 Ga

Certification numbers:

RLP ATEX

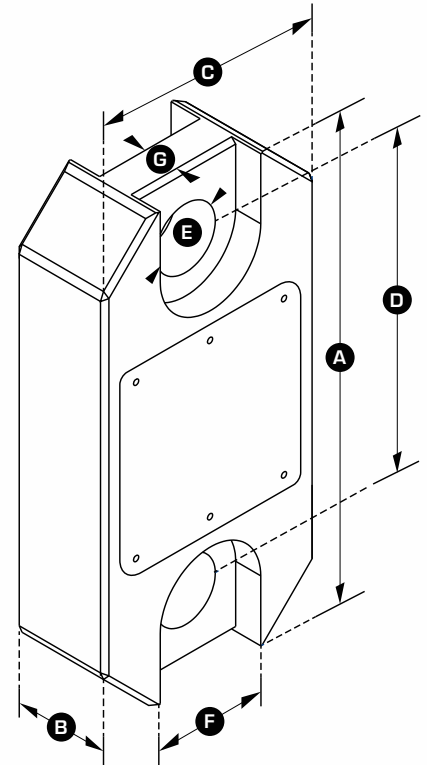
IECEx SIR 15.0071X / Sira 15ATEX2195X

SW-HHP ATEX

IECEx SIR 15.0072X / Sira 15ATEX2196X

Add 'ATEX' to the part number when ordering ATEX/IECEx products. For example: RLP6T5-ATEX

ONLY AVAILABLE FOR SW-HHP UNITS



PART NUMBER	SW-HHP	RLP1T	RLP2T5	RLP6T5	RLP12T	RLP25T	RLP35T	RLP55T	RLP75T	RLP100T	RLP150T	RLP200T	RLP250T	RLP300T	RLP500T
	BLUETOOTH	CP1T-BLE	CP2T5-BLE	CP6T5-BLE	CP12T-BLE	CP25T-BLE	CP35T-BLE	CP55T-BLE	CP75T-BLE	CP100T-BLE	CP150T-BLE	CP200T-BLE	CP250T-BLE	CP300T-BLE	CP500T-BLE
CAPACITY		1000kg	2.5te	6.5te	12te	25te	35te	55te	75te	100te	150te	200te	250te	300te	500te
RESOLUTION		0.5kg	0.001te	0.001te	0.002te	0.005te	0.005te	0.01te	0.01te	0.05te	0.05te	0.1te	0.1te	0.1te	0.1te
UNITS		kg	te	te	te	te	te	te	te	te	te	te	te	te	te
WEIGHT		1.5kg	1.5kg	2.4kg	3.7kg	5kg	8.6kg	13kg	16kg	34kg	46kg	82kg	82kg	118kg	193kg
SAFETY FACTOR		12:1	7:1	7:1	7:1	5:1	5:1	5:1	5:1	5:1	4:1	5:1	4:1	5:1	5:1
BATTERY TYPE	Handheld 2 x AA/Load cell 4 x AA														
BATTERY LIFE	Handheld 60 hours/Load cell 1200 hours continuous (Load cell 500 hours if Bluetooth)														
DISPLAY TYPE	6 digit 25mm														
OPERATING TEMP	-10°C to +50°C														
ACCURACY	±0.1% of full scale														
FREQUENCY	2.4 GHz / Bluetooth 4.2														
SYSTEM RANGE	700 meters (100 meters if Bluetooth)														
DATA RATE	3 Hz - up to 200 Hz can be ordered for dynamic load monitoring applications														
PROTECTION	IP67 / NEMA6														
DIMENSION A	204	204	249	305	340	393	424	470	608	670	700	700	806	930	
DIMENSION B	43	43	43	47	60	75	75	75	99	99	144	144	150	150	
DIMENSION C	104	104	113	113	115	126	180	202	255	303	350	350	426	570	
DIMENSION D	146	146	165	193	215	225	230	260	320	360	350	350	350	450	
DIMENSION ØE	24.5	24.5	38	47.5	55	60	76	76	109	109	145	145	160	200	
DIMENSION F	48	48	66	Not relevant in this capacity											
DIMENSION G	19	19	32	Not relevant in this capacity											
CROSBY SHACKLE	G2130						G2140						G2160		
LOAD PIN Ø	19	19	25	35	51	57	57	70	83	95	121	127	152	180	