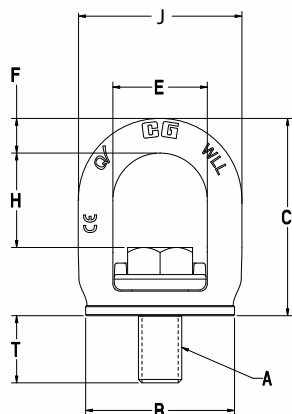


## CROSBY® SL150 SLIDE-LOC™

### ADDITIONAL INFORMATION:

- Forged Alloy Steel – Quenched and Tempered bail provides the following:
  - Easily readable “Raised Lettering” showing the name Crosby or “CG” and PIC Code for material traceability
  - Greater durability providing the increased “Toughness” desired in potentially abusive field conditions
  - Larger opening than standard eye bolts
- The Working Load Limit is permanently forged into each bail.
- 360° degree swivel
- Rated at 100% for 90 degree angle
- Fatigue rated to 20,000 cycles at 1-1/2 times the Working Load Limit
- Meets the Machinery Directive 2006/42/EC guidelines and is marked with CE accordingly
- Proof Tested to 2.5 times Working Load Limit (EN1677)
- Replacement bolts available, including longer bolts
- 4:1 Design Factor
- Manufactured by a ISO 9001 facility
- Bolt specification for metric bolt is Grade 10.9 alloy cap screw to ISO 898-1
- Unique locking mechanism makes the lifting point well suited for quick attachment to load surface. No need for tools
- Features **QUIC-CHECK®** markings on bail to assist in knowing when device is ready for lifting



### SL-150 M METRIC SLIDE-LOC™ LIFT POINT

WEIGHT EACH (kg)	SL-150M STOCK NO.	WORKING LOAD LIMIT (t) *	DIMENSIONS (mm)							EFFECTIVE THREAD PROJECTION LENGTH T
			BOLT SIZE A	B	C	E	F	H	J	
0.14	1068515	0.50	M10X1.5X25	35.5	53.0	28.0	8.5	27.8	45.0	14.6
0.23	1068524	0.75	M12X1.75X30	42.5	62.6	33.0	10.5	32.9	54.0	18.3
0.50	1068533	1.50	M16X2X40	55.0	75.7	37.0	13.2	37.0	63.4	24.5
0.94	1068542	2.30	M20X2.5X50	68.8	91.1	43.9	16.0	43.6	75.6	31.0
1.60	1068551	3.20	M24X3X60	82.5	110.0	52.8	19.2	52.8	91.2	37.0

\* Ultimate load is 4 times the Working Load Limit.



**SL- 150  
SLIDE-LOC  
LIFTING POINT**

### SL-150 UNC SLIDE-LOC™ LIFT POINT

WEIGHT EACH (lbs.)	SL-150 STOCK NO.	WORKING LOAD LIMIT (t) *	DIMENSIONS (in.)							EFFECTIVE THREAD PROJECTION LENGTH T
			BOLT SIZE A	B	C	E	F	H	J	
0.30	1068407	0.50	3/8-16 X1	1.40	2.09	1.10	0.33	1.11	1.77	0.60
0.53	1068416	0.75	1/2-13 X1-1/4	1.67	2.47	1.30	0.41	1.30	2.13	0.79
1.10	1068425	1.50	5/8-11X1-5/8	2.17	2.98	1.46	0.52	1.46	2.50	1.01
2.05	1068434	2.30	3/4-10 X 2	2.71	3.59	1.72	0.63	1.72	2.98	1.26
2.16	1068443	2.30	7/8-9 X 2	2.71	3.61	1.72	0.63	1.72	2.98	1.23
3.73	1068452	3.20	1-8 X 2-1/2	3.25	4.33	2.08	0.76	1.93	3.59	1.59

\* Ultimate load is 4 times the Working Load Limit.